

Swan Lake Ecosystem East Patchogue



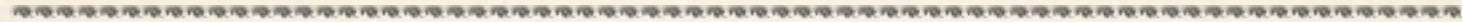
30 acres

(1 acre equals 43,560 feet)

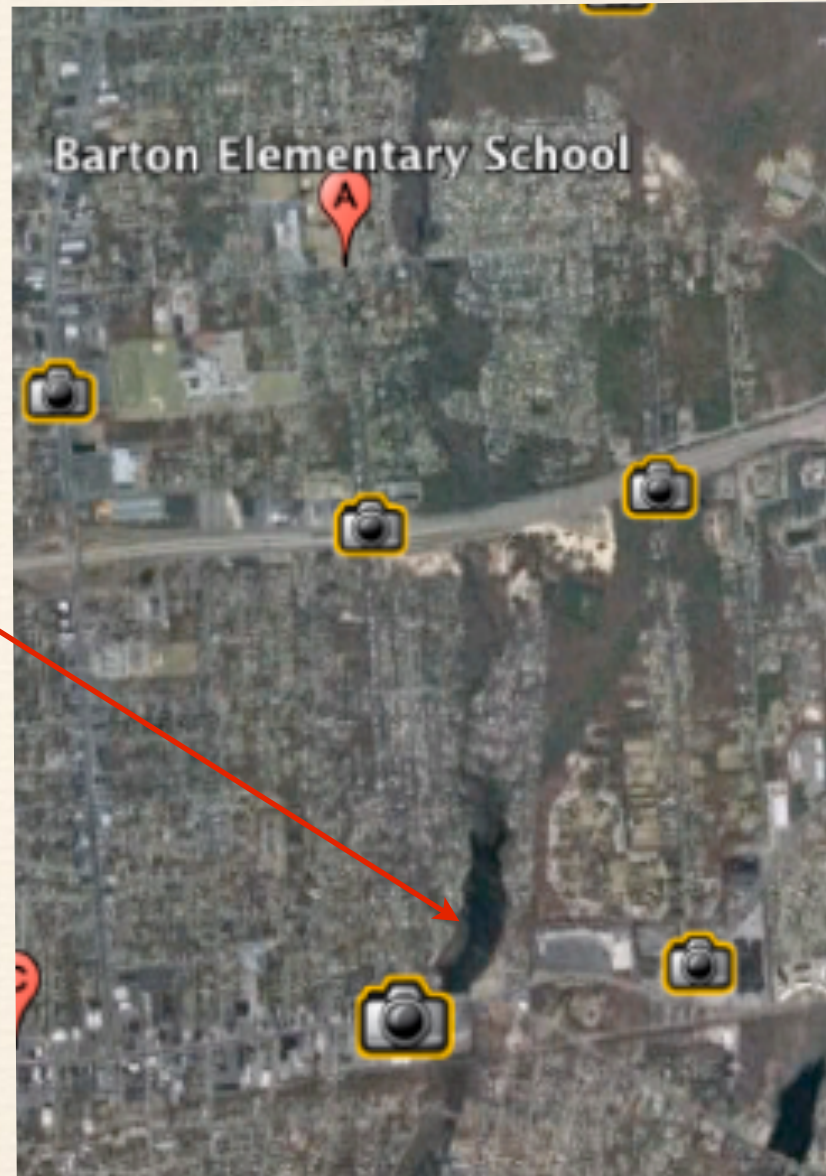
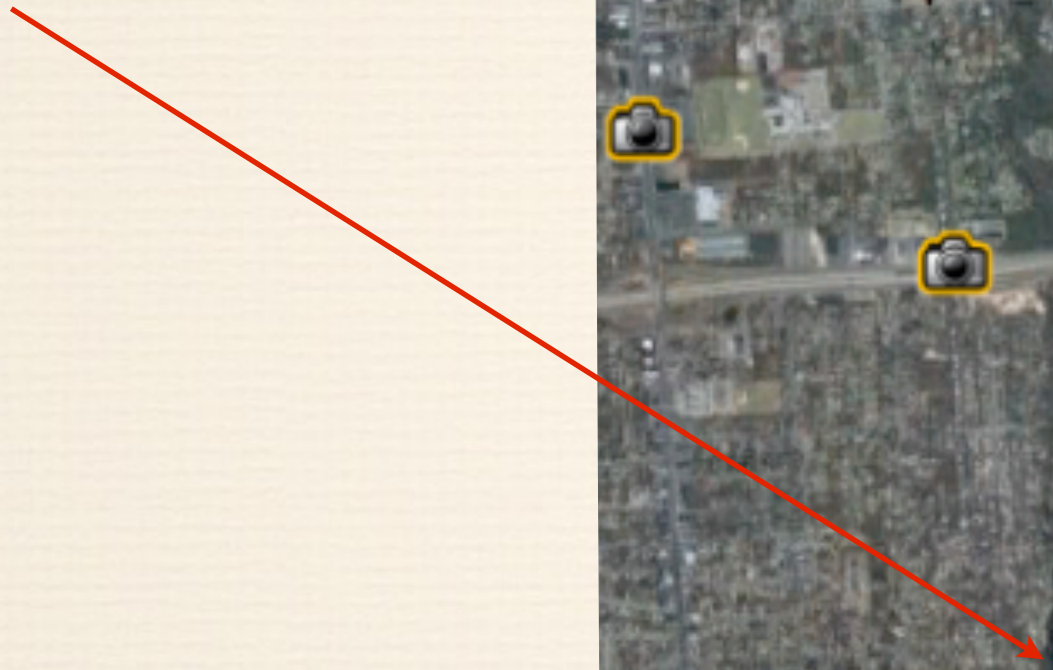
Lake: Maximum depth of 7 feet.

This lake is one of only a few lakes on Long Island that have a year round trout habitat.

Perspective



Swan Lake



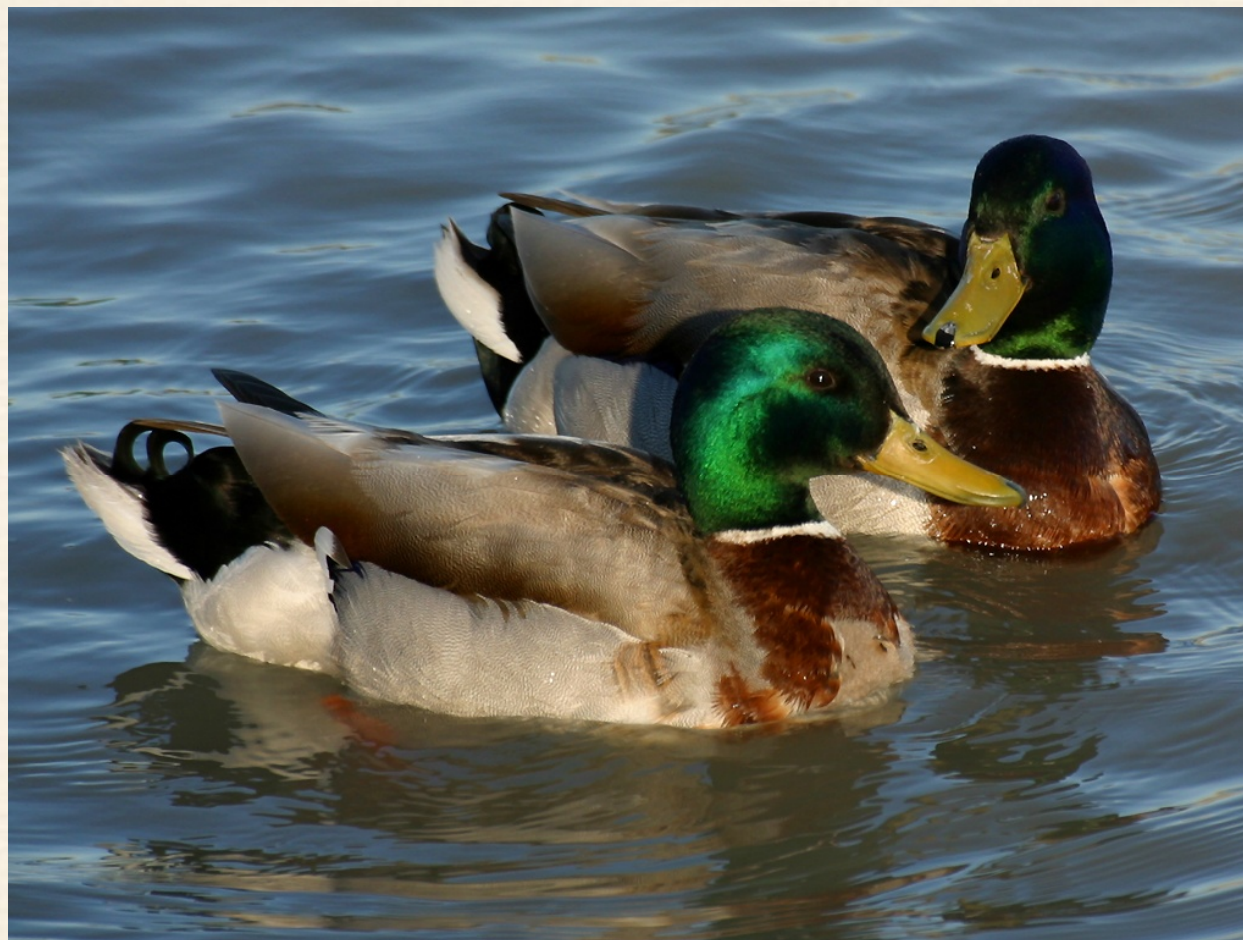
Aerial of Lake



Birds and Fish
of
Swan Lake



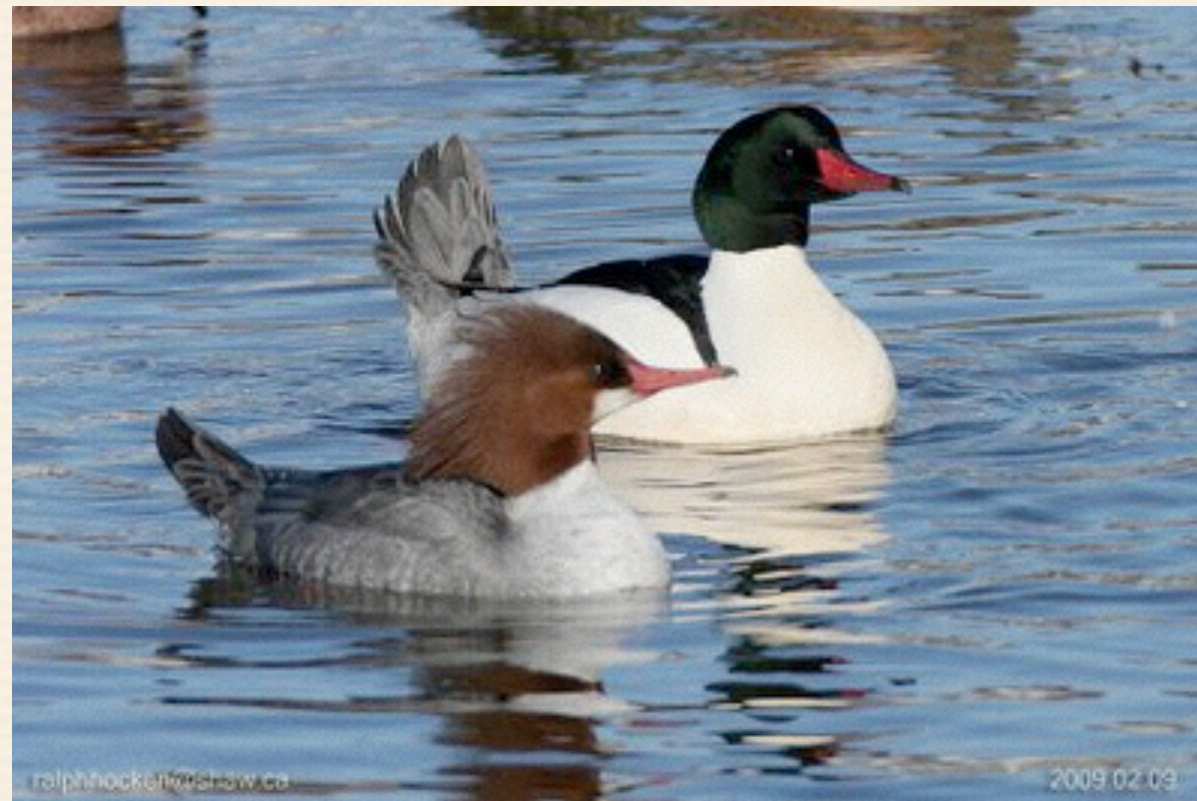
Mallards



Canvasbacks



Merganser



Pintail



Coot



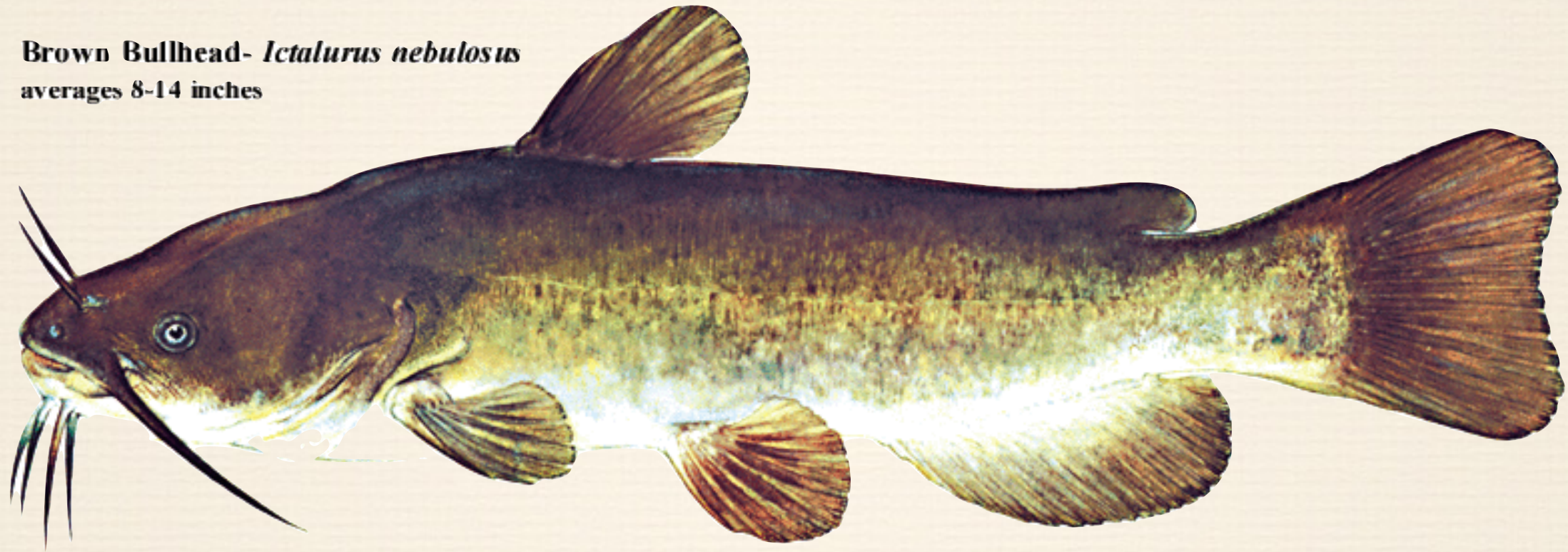
Shovelers



Brown Bullhead

Brown bullheads are nocturnal bottom feeders. They consume algae, plants, mollusks, insects, fish eggs and fish, although they probably do not prey heavily on fish eggs. They do, of course, compete for food with other bottom-feeding fish. Bullheads, especially when young, are eaten by muskies, northern pike, walleyes, and other predatory fish.

Brown Bullhead- *Ictalurus nebulosus*
averages 8-14 inches



Brown Trout



Rainbow Trout



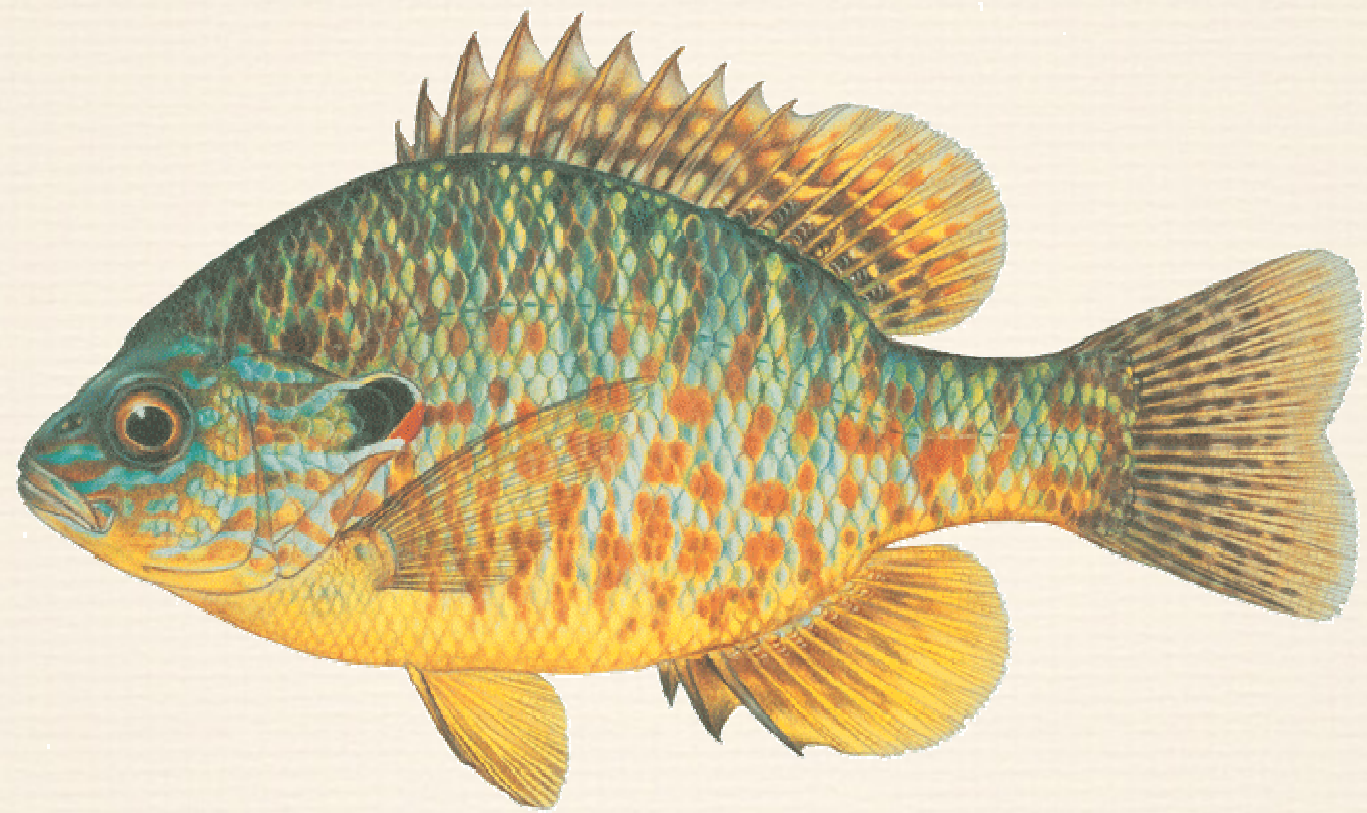
Large Mouth Bass



Yellow Perch



Pumpkin Seed



Conversion

- ❖ If 43,560 square feet equal one acre; how many square feet are in Swan Lake ?

List of Birds



Mallards



Canvasbacks



Merganser



Pintail



Coot



Shovelers